



TEJON-CASTAC
WATER
DISTRICT



South of Kern River Executive Committee Regular Meeting

Thursday, July 20, 2023

10:00 a.m. to 11:30 a.m.

Meeting Information Posted:

www.sokrgsp.com

<http://www.aewsd.org> * <http://www.wrmwsd.com>

<http://www.tejoncastacwd.com> * <https://www.arvincsd.com>

In Person: Arvin-Edison Water Storage District Headquarters
20401 E. Bear Mountain Blvd. Arvin, CA 93203

Via Remote (**Microsoft Teams**): <https://www.microsoft.com/microsoft-teams/join-a-meeting>

[Click here to join the meeting](#)

Meeting Number: **289 619 843 830**

Meeting Password: **ko5K35**

Phone: **1.213.437.9052**

Phone Meeting Number (access code): **276 512 496#**

NOTICE: Members of the public interested in participating by teleconference may do so using the call-in information above or by following [this link](#). Please note that this teleconference option is provided as a courtesy and at the participant's own risk. The Committee cannot guarantee that there will be no loss of connectivity or other technological obstacle to full participation through teleconferencing. By participating in this way, participants confirm that they understand this risk and that the Committee is not obliged to delay any portion of the meeting due to such technological obstacles and thus that teleconference participants may be unable to participate.

1. CALL TO ORDER
2. ROLL CALL
3. PLEDGE OF ALLEGIANCE
4. APPROVAL OF JUNE 14, 2023 MEETING MINUTES
5. PUBLIC COMMENT
6. REPORT ITEMS
 - a. GSP Manager Report (*Muhar*)
 - i. Basin Coordination Committee
 - b. Technical Consultant Report (*EKI*)
 - i. Technical Working Group (TWG) Update
 - ii. SGMA Monitoring Network performance and sustainable management criteria (SMCs) compliance
 - c. Attorney Report (*Gantenbein*)
 - d. Finance Report (*Nicholas*)

e. California Aqueduct Subsidence Program (CASP) update (*Nicholas*)

f. Management Area updates (*Muhar, Nicholas, Martin, Barraza*)

7. ACTION ITEMS

a. Consider TWG recommended subbasin-wide groundwater level SMCs definitions (*EKI*)

8. CORRESPONDENCE

9. CLOSED SESSION

a. Potential Litigation (Government Code §54956.9(d)(2), (e)(1); 1 item).

10. ADJOURNMENT

**MINUTES OF THE MEETING OF THE
SOUTH OF KERN RIVER EXECUTIVE COMMITTEE
June 14, 2023**

Director Yurosek called to order the monthly meeting at 2:05 p.m., with a quorum and attendance by:

Executive Committee Directors

Derek Yurosek – Arvin-Edison Water Storage District (AEWSD) (in person)

Mark Valpredo – Tejon-Castac Water District (TCWD) (in person)

Michael Blaine – Wheeler Ridge-Mariposa Water Storage District (WRMWSD) (in person)

District Staff

Raul Barraza – Arvin Community Services District (ACSD) (in person)

Jeevan Muhar – AEWSD (in person)

Angelica Martin – TCWD (remote)

Sheridan Nicholas – WRMWSD (in person)

Director Gallardo – ACSD was absent.

Participants recited the Pledge of Allegiance.

APPROVAL OF APRIL 13, 2023 MEETING MINUTES

Director Blaine moved to approve the April 13, 2023 South of Kern River (SOKR) Executive Committee meeting minutes. Director Yurosek seconded. The motion passed unanimously.

PUBLIC COMMENT

There were no public comments.

REPORT ITEMS

GSP Manager Report

Basin Coordination Committee

Mr. Muhar summarized the Subbasin's ongoing efforts to work with State Water Resources Control Board (SWRCB) staff. The Coordination Committee has met numerous times, with participation by the Subbasin's Technical Working Group (TWG), to discuss potential responses to the deficiencies identified by the Department of Water Resources (DWR). The SWRCB will discuss basin prioritization for probationary hearing(s) as an informational item at its June 21 meeting. The Kern Subbasin Plan Manager will make a public statement on behalf of the Subbasin at that meeting.

Five entities have left the Kern Groundwater Authority (KGA) to form two new Groundwater Sustainability Plan (GSP) groups, resulting in two new representatives to the Coordination Committee.

Technical Consultant Report

Technical Working Group Update

EKI reported on the subbasin-wide technical work efforts the TWG has been conducting over the past two months to address DWR-identified GSP deficiencies, including developing and examining alternative minimum threshold (MT) approaches.

SGMA Monitoring Network performance and sustainable management criteria compliance

EKI reported on the status of May 2023 groundwater levels in comparison to sustainable management criteria (SMCs).

Attorney Report

Ms. Gantenbein reported that attorneys representing Groundwater Sustainability Agencies (GSAs) in the Subbasin have met.

Finance Report

Mr. Nicholas reported on the SOKR expenses incurred between April 2022 through April 2023, which are equally split between WRMWSD, AEWSD, and TCWD. WRMWSD will continue billing as necessary.

California Aqueduct Subsidence Program (CASP) update

Mr. Nicolas reported that SOKR managers participated in a follow up meeting with CASP staff on May 26, 2023. CASP provided comments and feedback on SOKR's proposed methodology and the unique circumstances of the California Aqueduct segments located within the Wheeler Ridge-Maricopa GSA area. CASP staff reported that it is looking forward to working with SOKR GSAs to address subsidence SMCs.

Management Area Updates

Mr. Muhar reported that Arvin GSA is making progress on completing pipeline projects supported by the \$25 million bond secured in early 2023 to expand surface water delivery into four new units.

Mr. Nicholas reported that WRM GSA is going through a Proposition 218 process that would place a groundwater extraction charge on users.

Ms. Martin had nothing to report for TCWD GSA.

ACTION ITEMS

Consider recommendation to prepare Notice of Plan Amendment

Ms. Gantenbein discussed that SGMA requires that a GSA provide a minimum 90 days' notice to any County or City covered by a Groundwater Sustainability Plan (GSP) prior to taking action to amend that GSP. Given the SOKR GSAs' are working to amend the SOKR GSP in response to DWR's Inadequate Determination, she asked the Directors to consider formally recommending that the SOKR GSA boards approve issuance of such notice at the earliest opportunity.

Director Valpredo moved to recommend that the SOKR GSAs issue notices of intent to amend the SOKR GSP at the earliest possible date, pending GSA board approval. Director Blaine seconded. The motion passed unanimously.

Consider updates to website

The Executive Committee decided to maintain past meeting materials on the SOKR GSP website.

Consider endorsement of and recommendation for funding the EKI Task Order for GSP Implementation Support July through September 2023

Mr. Muhar discussed EKI's Task Order covering work efforts for the next three months, which includes significant time leading and producing technical work products to support the TWG.

Director Valpredo moved to endorse and recommend funding EKI's Task Order. Director Blaine seconded. The motion passed unanimously.

CORRESPONDENCE

- Letter from the California Department of Water Resources "Re: Periodic Evaluation Requirements for Inadequate Basins", dated 2 May 2023.
- Letter from the North Central Kern GSA Group "Re: Notice of Intent to Withdraw from KGA and File Separate Groundwater Sustainability Plan", dated 16 May 2023.
- Letter from Rosedale-Rio Bravo Water Storage District "Re: Notice of Intent to Withdraw from Kern Groundwater Authority Joint Powers Authority", dated 16 May 2023.

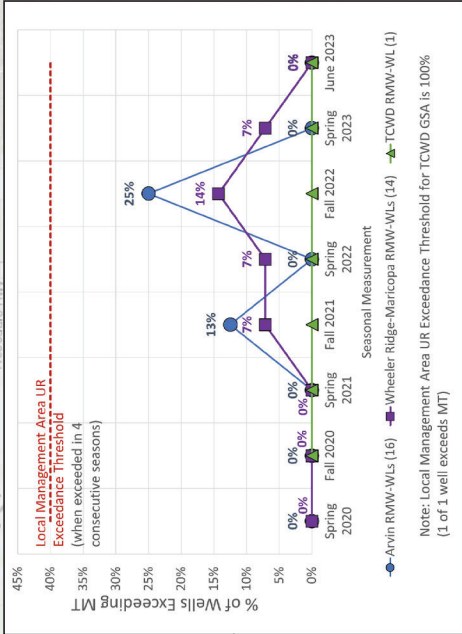
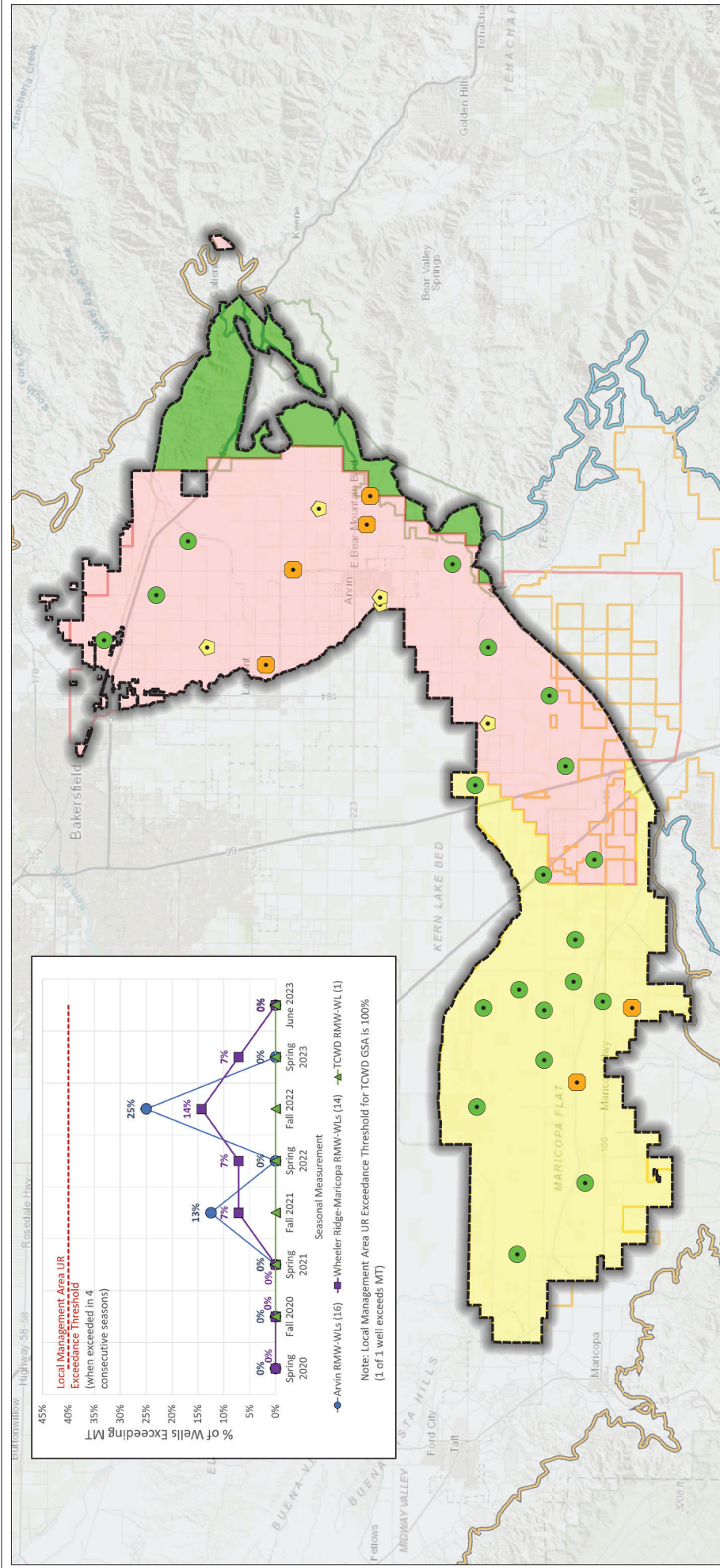
CLOSED SESSION

Conference with Legal Counsel pursuant to Government Code §54956.9(d)(2), (e)(1) (potential litigation; 1 item). There was no action to report out of closed session.

ADJOURNMENT

Director Yurosek adjourned the South of Kern River Executive Committee meeting at 3:26 p.m.

Mark Valpredo, South of Kern River
Executive Committee Secretary



Legend

- Water Level Above MO (20 or 65%)
- Water Level between MO and MT but closer to MO (5 or 16%)
- Water Level between MO and MT but closer to MT (6 or 19%)
- South of Kern River Plan
- Arvin GSA
- Wheeler Ridge-Maricopa GSA
- Tejon-Castac Water District GSA
- WRMWSD Service Area
- AEWSD Service Area
- TCWD Service Area
- Groundwater Subbasin
- Kern County (DWR 5-022.14)
- White Wolf (DWR 5-022.18)

Representative Monitoring Well and Status as of June 2023

- Water Level Above MO (20 or 65%)
- Water Level between MO and MT but closer to MO (5 or 16%)
- Water Level between MO and MT but closer to MT (6 or 19%)
- South of Kern River Plan
- Arvin GSA
- Wheeler Ridge-Maricopa GSA
- Tejon-Castac Water District GSA
- WRMWSD Service Area
- AEWSD Service Area
- TCWD Service Area
- Groundwater Subbasin
- Kern County (DWR 5-022.14)
- White Wolf (DWR 5-022.18)

Abbreviations

- AEWSD = Arvin-Edison Water Storage District
- DWR = California Department of Water Resources
- GSA = Groundwater Sustainability Agency
- MO = Measurable Objective
- MT = Minimum Threshold
- RMW = Representative Monitoring Well
- SGMA = Sustainable Groundwater Management Act
- SMC = Sustainable Management Criteria
- TCWD = Tejon-Castac Water District
- UR = Undesirable Result
- WRMWSD = Wheeler Ridge-Maricopa Water Storage District

Notes

- All locations are approximate.
- Undesirable Results are deemed to occur if groundwater levels in 40% or more RMWs are below their respective MT for four consecutive biannual measurements (Spring and Fall) in any management area.

Sources

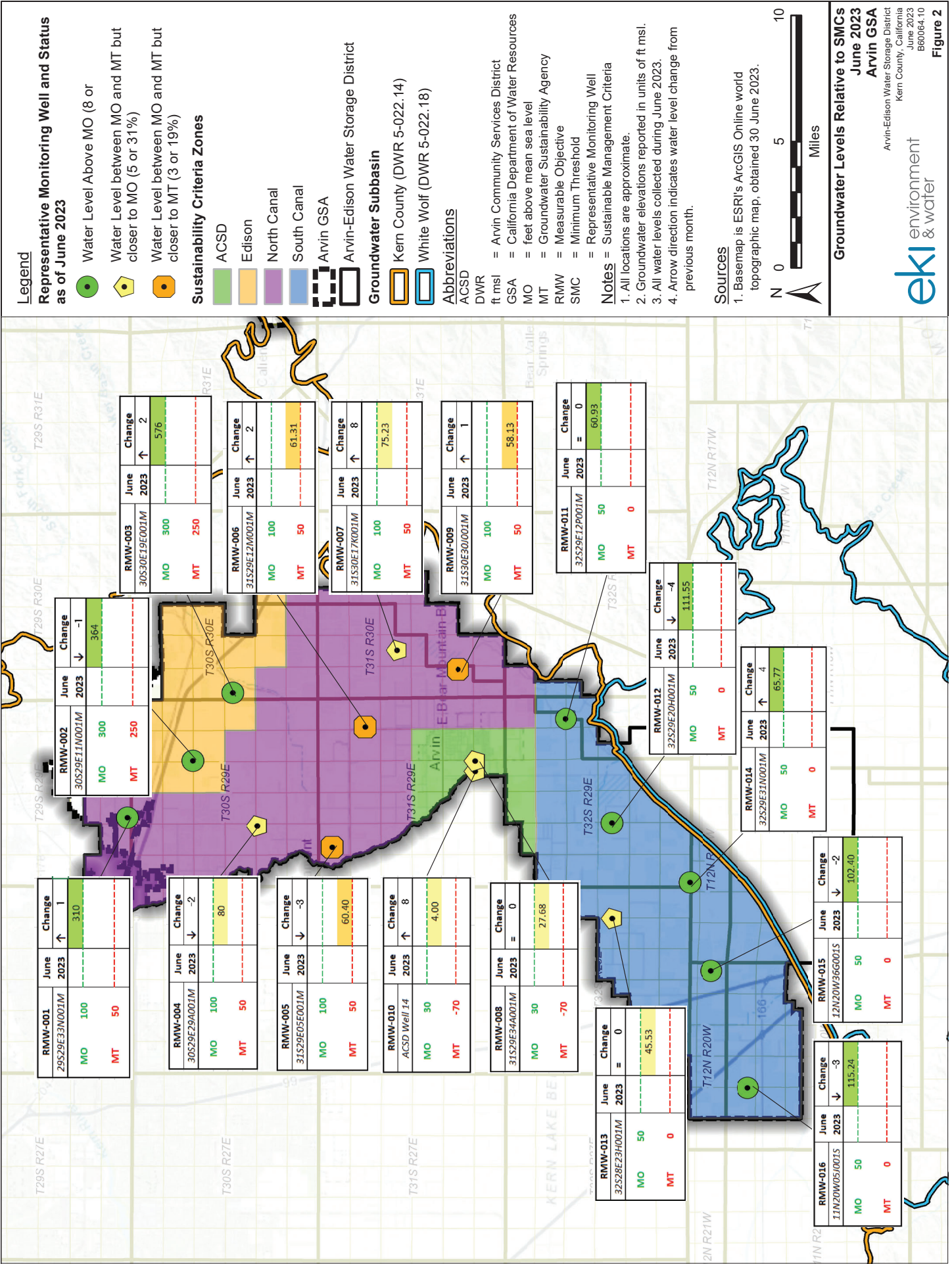
- Basemap is ESRI's ArcGIS Online world topographic map, obtained 11 July 2023.
- GSA boundaries obtained from SGMA GSA Map Viewer portal, accessed 6 May 2022.
- DWR groundwater basins are based on the boundaries defined in California's Groundwater Bulletin 118 - 2019 Update.

June 2023 Water Levels Relative to SMCs

South of Kern River GSP
Kern County, CA
June 2023
C20055.00

Figure 1





Legend
Representative Monitoring Well and Status as of June 2023

- Water Level Above MO (8 or closer to MO and MT but closer to MO (5 or 31%))
- Water Level between MO and MT but closer to MO (5 or 31%)
- Water Level between MO and MT but closer to MT (3 or 19%)

Sustainability Criteria Zones

- ACSD
- Edison
- North Canal
- South Canal
- Arvin GSA
- Arvin-Edison Water Storage District

Groundwater Subbasin

- Kern County (DWR 5-022.14)
- White Wolf (DWR 5-022.18)

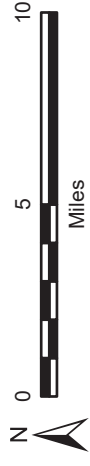
Abbreviations

- ACSD = Arvin Community Services District
- DWR = California Department of Water Resources
- ft msl = feet above mean sea level
- GSA = Groundwater Sustainability Agency
- MO = Measurable Objective
- MT = Minimum Threshold
- RMW = Representative Monitoring Well
- SMC = Sustainable Management Criteria

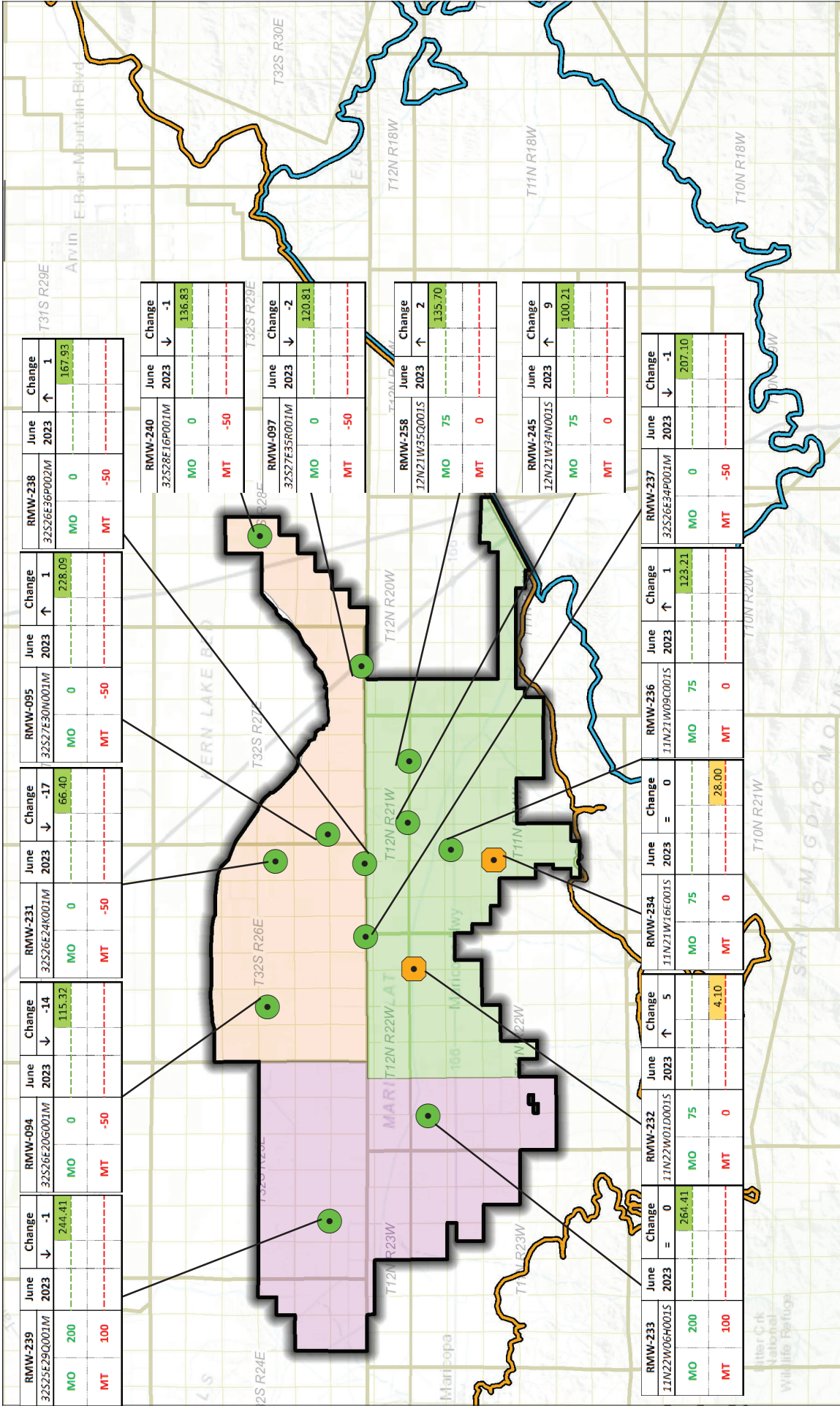
- Notes**
- All locations are approximate.
 - Groundwater elevations reported in units of ft msl.
 - All water levels collected during June 2023.
 - Arrow direction indicates water level change from previous month.

Sources

- Basemap is ESRI's ArcGIS Online world topographic map, obtained 30 June 2023.



INTERIM FIGURE - FOR INFORMATIONAL PURPOSES ONLY



Legend

Groundwater Subbasin

- Kern County (DWR 5-022.14)
- White Wolf (DWR 5-022.18)

Sustainability Criteria Zones

- Northeast
- Southeast
- West
- Wheeler Ridge-Maricopa GSA

Notes

- All locations are approximate.
- Groundwater elevations reported in units of ft msl.
- All water levels collected during June 2023.
- Arrow direction indicates water level change from previous month.

SOURCES

- Basemap is ESRI's ArcGIS Online world topographic map, obtained 11 July 2023.

Representative Monitoring Well and Status as of June 2023

- Water Level Above MO (12 or 86%)
- Water Level Between MO and MT but closer to MT (2 or 14%)

Abbreviations

DWR = California Department of Water Resources

ft msl = feet above mean sea level

GSA = Groundwater Sustainability Agency

MO = Measurable Objective

MT = Minimum Threshold

SMC = Sustainable Management Criteria

Groundwater Levels Relative to SMCs June 2023

Wheeler Ridge-Maricopa GSA

South of Kern River

Kern County, California

June 2023

C20055.00

Figure 3

Legend

Representative Monitoring Well and Status as of June 2023

- Water Level Above MO (8 or 50%)
- Water Level between MO and MT but closer to MO (5 or 31%)
- Water Level between MO and MT but closer to MT (3 or 19%)
- + District Recovery Well
- AEWSD Spreading Basin
- Arvin GSA
- Arvin-Edison Water Storage District
- Groundwater Subbasin
- Kern County (DWR 5-022.14)
- White Wolf (DWR 5-022.18)

Abbreviations

- AEWSD = Arvin-Edison Water Storage District
- DWR = California Department of Water Resources
- ft.msl = feet above mean sea level
- GWE = groundwater elevation
- MO = measurable objective
- MT = minimum threshold
- RMW = Representative Monitoring Well

NOTES

1. All locations are approximate.
2. Groundwater elevations are in feet mean sea level.
3. Undesirable Results are deemed to occur if groundwater levels in 40% or more (7 or more) RMWs are below their respective MT for 4 consecutive bi-annual measurements (Spring and Fall).
4. All RMW status based on May 2023 measurements.

SOURCES

1. Basemap is ESRI's ArcGIS Online world topographic map, obtained 29 June 2023.
2. Water level information obtained from AEWSD.

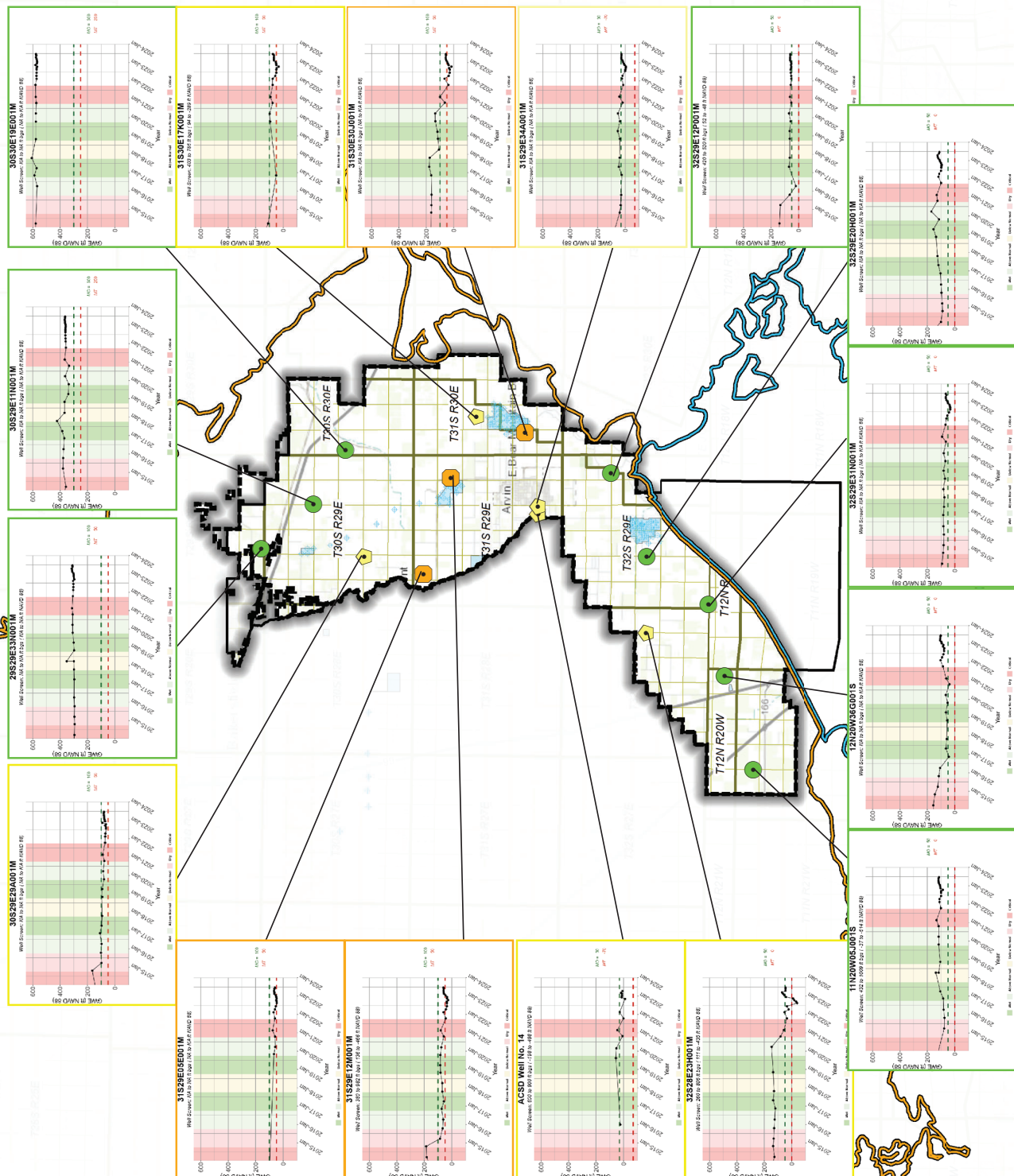
DRAFT

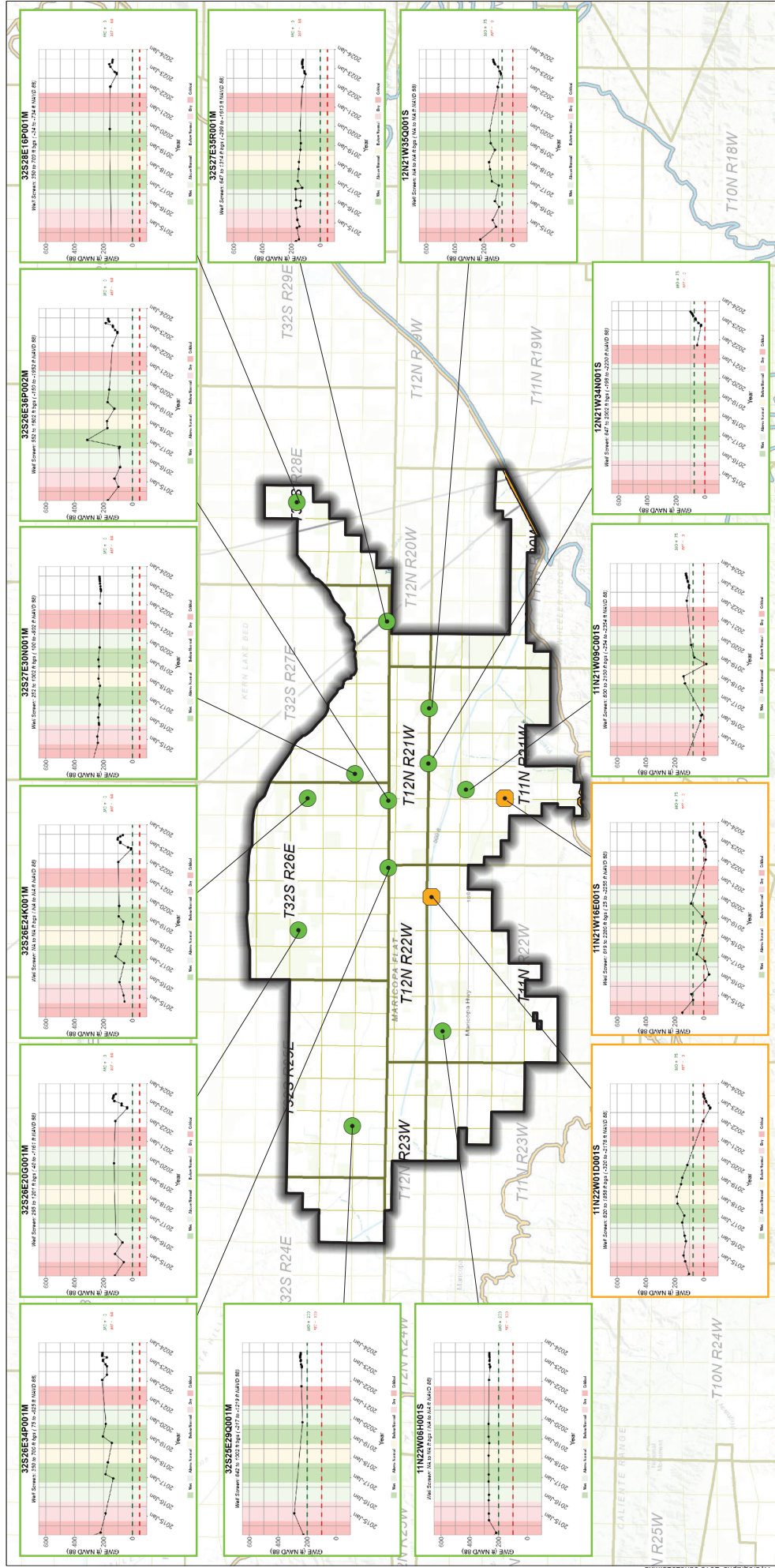
Hydrographs in Representative Monitoring Wells (Jan 2015 - June 2023)

Arvin-Edison Water Storage District
Kern County, CA
June 2023
C20055.01

Figure 4

INTERIM FIGURE - FOR INFORMATIONAL PURPOSES ONLY





Legend

- Water Level Above MO (12 or 66%)
- Water Level Between MO and MT but Closer to MT (2 or 14%)
- Wheeler Ridge-Maricopa GSA
- Groundwater Subbasin
- Kern County (DWR 5-022.14)
- White Wolf (DWR 5-022.18)

Notes

- All locations are approximate.
- Groundwater elevations are in feet mean sea level.
- Undesirable Results are deemed to occur if groundwater levels in 40% or more (6 or more) RWMS are below their respective MT for 4 consecutive bi-annual measurements (Spring and Fall).
- All RMW status based on June 2023 measurements.

Abbreviations

- DWR = California Department of Water Resources
- ft AMSL = feet above mean sea level
- GSA = Groundwater Sustainability Agency
- MO = Measurable Objective
- MT = Minimum Threshold
- RMW = Representative Monitoring Well
- WRMWS = Wheeler Ridge-Maricopa Water Storage District

Hydrographs in Representative Monitoring Wells (January 2015 - June 2023)

Wheeler Ridge-Maricopa Water Storage District
Kern County, CA
June 2023
B70103.01
Figure 5

INTERIM FIGURE - FOR INFORMATIONAL PURPOSES ONLY