



TEJON-CASTAC
WATER
DISTRICT



South of Kern River Executive Committee Regular Meeting

Friday, October 20, 2023

12:00 p.m. to 1:30 p.m.

Meeting Information Posted:

www.sokrgsp.com

<http://www.aewsd.org> * <http://www.wrmwsd.com>

<http://www.tejoncastacwd.com> * <https://www.arvincsd.com>

In Person: Arvin-Edison Water Storage District Headquarters
20401 E. Bear Mountain Blvd. Arvin, CA 93203

Via Remote (**Microsoft Teams**): <https://www.microsoft.com/microsoft-teams/join-a-meeting>

[Click here to join the meeting](#)

Meeting Number: **289 619 843 830**

Meeting Password: **ko5K35**

Phone: **1.213.437.9052**

Phone Meeting Number (access code): **276 512 496#**

NOTICE: Members of the public interested in participating by teleconference may do so using the call-in information above or by following [this link](#). Please note that this teleconference option is provided as a courtesy and at the participant's own risk. The Committee cannot guarantee that there will be no loss of connectivity or other technological obstacle to full participation through teleconferencing. By participating in this way, participants confirm that they understand this risk and that the Committee is not obliged to delay any portion of the meeting due to such technological obstacles and thus that teleconference participants may be unable to participate.

1. CALL TO ORDER
2. ROLL CALL
3. PLEDGE OF ALLEGIANCE
4. APPROVAL OF THE AGENDA
5. APPROVAL OF SEPTEMBER 14, 2023 MEETING MINUTES
6. PUBLIC COMMENT
7. REPORT ITEMS
 - a. GSP Manager Report (*Muhar*)
 - i. Basin Coordination Committee
 - b. Technical Consultant Report (*EKI*)
 - i. Technical Working Group (TWG) Update
 - ii. Key takeaways from State Water Resources Control Board (SWRCB) draft staff report on the Tulare Lake Subbasin
 - iii. SGMA Monitoring Network performance and sustainable management criteria (SMC) compliance

- c. Finance Report (*Nicholas*)
 - d. California Aqueduct Subsidence Program (CASP) update (*Nicholas*)
 - e. Management Area updates (*Muhar, Nicholas, Martin, Barraza*)
8. CLOSED SESSION
- a. Potential Litigation (Government Code §54956.9(d)(2), (e)(1); 1 item).
9. ADJOURNMENT

**MINUTES OF THE MEETING OF THE
SOUTH OF KERN RIVER EXECUTIVE COMMITTEE
September 14, 2023**

Director Yurosek called to order the monthly meeting at 10:00 a.m., with a quorum and attendance by:

Executive Committee Directors

Derek Yurosek – Arvin-Edison Water Storage District (AEWSD; Arvin GSA) (in person)

Mark Valpredo – Tejon-Castac Water District (TCWD; Tejon-Castac GSA) (in person)

Michael Blaine – Wheeler Ridge-Mariposa Water Storage District (WRMWSO; Wheeler Ridge-Maricopa GSA) (in person)

District Staff

Jeevan Muhar – AEWSD (in person)

Sheridan Nicholas – WRMWSO (in person)

Angelica Martin – TCWD (remote)

Raul Barraza – Arvin Community Services District (ACSD) (in person)

Rafael Gallardo – ACSD was absent.

Participants recited the Pledge of Allegiance.

APPROVAL OF THE AGENDA

Director Yurosek proposed moving action items after the closed session. Director Valpredo moved to approve the proposed agenda. Director Blaine seconded. The motion passed by unanimous vote.

APPROVAL OF AUGUST 10, 2023 MEETING MINUTES

Director Valpredo moved to approve the August 10, 2023 South of Kern River (SOKR) Executive Committee meeting minutes. Director Blaine seconded. The motion passed by unanimous vote.

PUBLIC COMMENT

There were no public comments.

REPORT ITEMS

GSP Manager Report

Basin Coordination Committee

Mr. Muhar reported that the Coordination Committee continues to (1) work on a subbasin-wide chronic lowering of groundwater levels Minimum Threshold (MT) methodology, and (2) discuss minor Plan Manager contract modifications and cost share. Additionally, the subbasin will need to address management of white lands in a forthcoming meeting.

Technical Consultant Report

Technical Working Group (TWG) Update

EKI reported on the subbasin-wide technical work the TWG has been conducting over the past month to address DWR-identified GSP deficiencies, including developing recommended subbasin-wide MT approaches and preparing for meeting with the SWRCB Staff on October 4, 2023.

There were no public comments.

SGMA Monitoring Network performance and sustainable management criteria (SMCs) compliance

EKI reported on the status of August 2023 groundwater levels in comparison to SMCs.

Finance Report

Mr. Nicholas reported on finances to date, which are split equally between the SOKR GSAs. WRMWSD will continue to be billed and AEWSD and TCWD will reimburse WRMWSD. He noted that the latest Coordination Committee funding request has been modified, and subsequent cash calls for the Subbasin Plan Manager will be split eight ways equally.

California Aqueduct Subsidence Program (CASP) update

Mr. Nicolas reported that a meeting with CASP has been scheduled for September 29th.

Management Area Updates

Mr. Muhar reported on the substantial progress on SGMA recharge projects, including:

- AEWSD continues to recharge water supplies, including the landowner on-farm recharge program, which has recharged over 8,000 acre-feet (AF).
- The new interconnection with Kern Delta successfully delivered almost 10,000 AF to the Eastside Canal for the first time ever, to help bolster water levels in that area.
- With support from Kern River GSA, the approximate 3,000 acres Frick unit is underway.

Mr. Nicholas reported WRMWSD continues with the landowner recharge and banking projects, which have recharged over 26,000 AF, and the WRMWSD board elected to allow landowners to receive a groundwater credit instead of payment, which will tie into the groundwater benefit charge that WRMWSD has imposed. Finally, WRMWSD started committee meetings to discuss demand management.

Ms. Martin reported no updates from last month.

Mr. Barraza reported no updates from last month.

CORRESPONDENCE

Memo Re: Revised GSP, Next Steps, and Timeline, from GEI Consultants, Inc. with Support from the Technical Working Group, dated 1 September 2023.

CLOSED SESSION

Conference with Legal Counsel pursuant to Government Code §54956.9(d)(2), (e)(1) (potential litigation; 1 item). There was no action to report out of closed session.

ACTION ITEMS

Consider endorsement of and recommendation for funding the EKI Task Order for Groundwater Sustainability Plan (GSP) Implementation Support October through December 2023

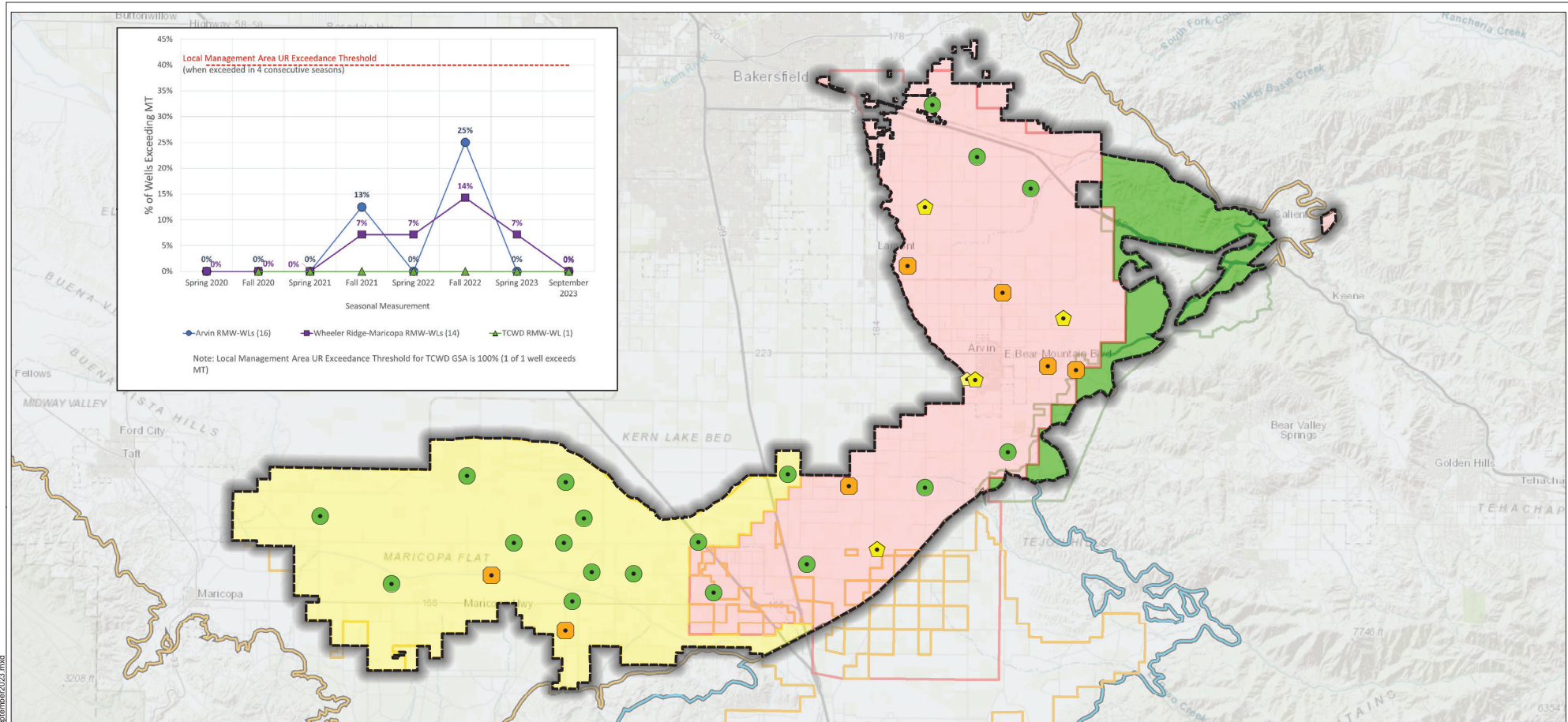
Mr. Muhar discussed EKI's Task Order covering work efforts for the next three months, which includes significant time leading and producing technical work products to support the TWG, as outlined in the next steps memo.

Director Valpredo moved to endorse and recommend funding EKI's Task Order, with the understanding that a cost share for subbasin wide work needs to be established moving forward. Director Blaine seconded. The motion passed by unanimous vote.

ADJOURNMENT

Director Yurosek adjourned the South of Kern River Executive Committee meeting at 12:07 p.m.

Mark Valpredo, South of Kern River
Executive Committee Secretary



Legend

Representative Monitoring Well and Status as of September 2023

- Water Level Above MO (7 or)
- Water Level Between MO and MT but closer to MO (5 or 31%)
- Water Level Between MO and MT but closer to MT (4 or 25%)
- South of Kern River Plan
- Arvin GSA
- Wheeler Ridge-Maricopa GSA
- Tejon-Castac Water District GSA

- WRMWS District Service
- AEWS District Service
- TCWD Service
- Groundwater Subbasin**
- Kern County (DWR 5-022.14)
- White Wolf (DWR 5-022.18)

Abbreviations

- AEWS District = Arvin-Edison Water Storage District
- DWR = California Department of Water Resources
- GSA = Groundwater Sustainability Agency
- MO = Measurable Objective
- MT = Minimum Threshold
- RMW = Representative Monitoring Well
- SGMA = Sustainable Groundwater Management Act
- SMC = Sustainable Management Criteria
- TCWD = Tejon-Castac Water District
- UR = Undesirable Result
- WRMWS District = Wheeler Ridge-Maricopa Water Storage District

Notes

1. All locations are approximate.
2. Undesirable Results are deemed to occur if groundwater levels in 40% or more RMWs are below their respective MT for four consecutive bi-annual measurements (Spring and Fall) in any management area.

Sources

1. Basemap is ESRI's ArcGIS Online world topographic map, obtained 5 October 2023.
2. GSA boundaries obtained from SGMA GSA Map Viewer portal, accessed 6 May 2022.
3. DWR groundwater basins are based on the boundaries defined in California's Groundwater Bulletin 118 - 2019 Update.



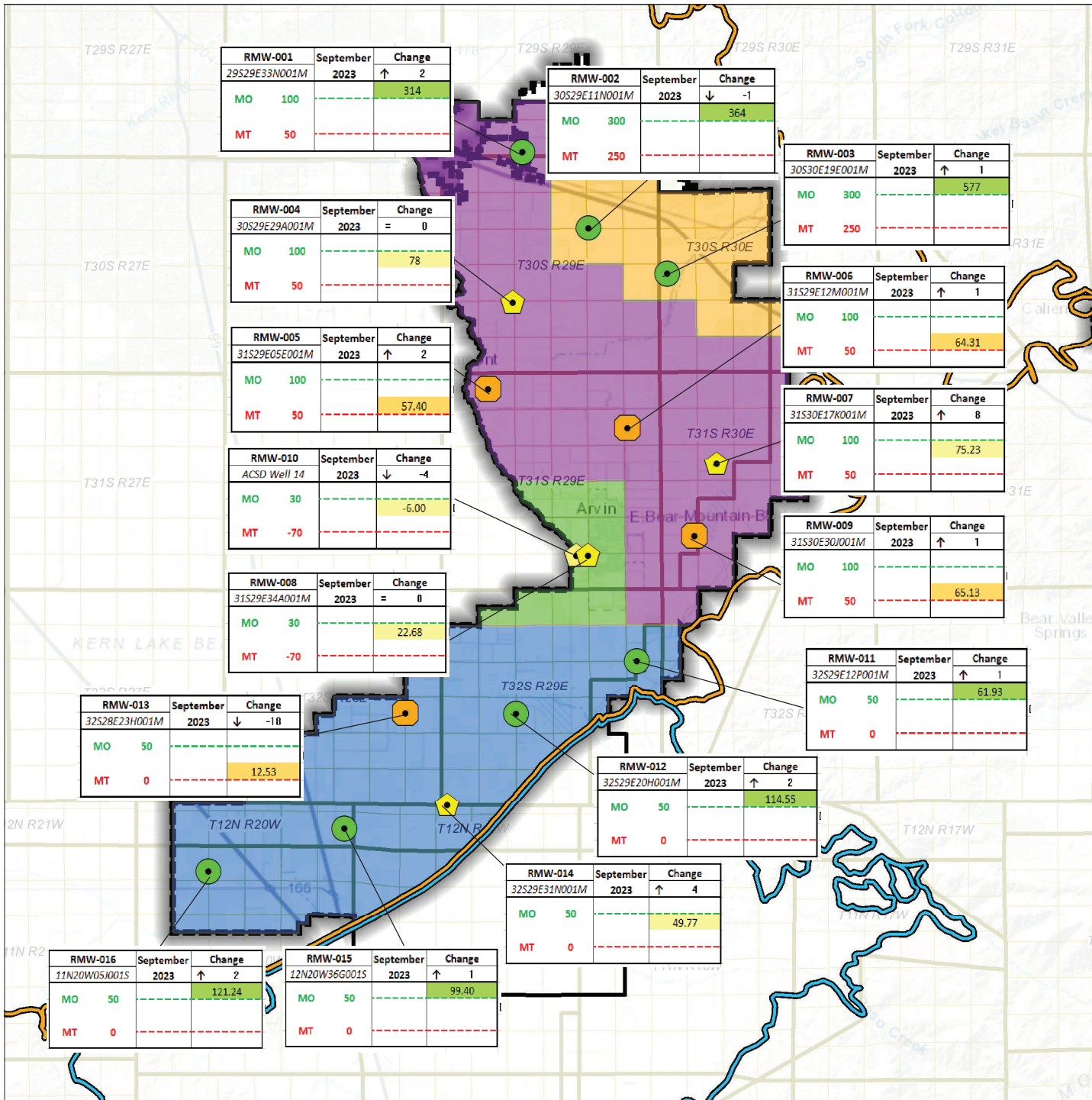
September 2023 Water Levels Relative to SMCs

South of Kern River GSP
 Kern County, CA
 August 2023
 C20055.00
Figure 1



INTERIM FIGURE - FOR INFORMATIONAL PURPOSES ONLY

Path: X:\C20055.00\Mapas\2023\08\SMC_Figures\Fig1_SOKR_GWL_Level_Mt_Sep2023.mxd



Legend

Representative Monitoring Well and Status as of September 2023

- Water Level Above MO (7 or 44%)
- ⬠ Water Level Between MO and MT but closer to MO (5 or 31%)
- ⬠ Water Level Between MO and MT but closer to MT (4 or 25%)

Sustainability Criteria Zones

- ACSD
- Edison
- North Canal
- South Canal

- Arvin GSA
- Arvin-Edison Water Storage District

Groundwater Subbasin

- Kern County (DWR 5-022.14)
- White Wolf (DWR 5-022.18)

Abbreviations

- ACSD = Arvin Community Services District
- DWR = California Department of Water Resources
- ft msl = feet above mean sea level
- GSA = Groundwater Sustainability Agency
- MO = Measurable Objective
- MT = Minimum Threshold
- RMW = Representative Monitoring Well
- SMC = Sustainable Management Criteria

Notes

1. All locations are approximate.
2. Groundwater elevations reported in units of ft msl.
3. All water levels collected during September 2023.
4. Arrow direction indicates water level change from previous month.

Sources

1. Basemap is ESRI's ArcGIS Online world topographic map, obtained 2 October 2023.

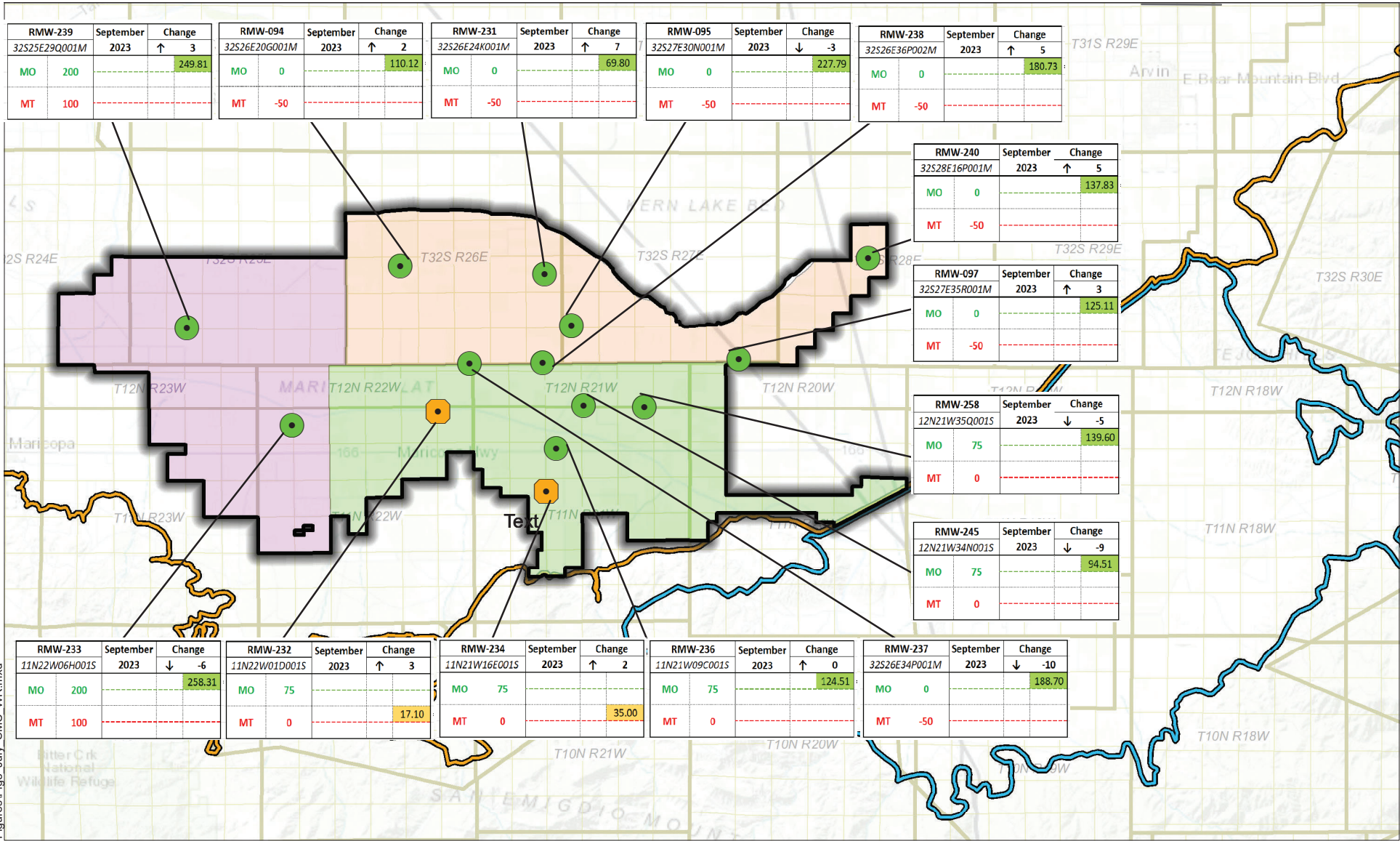


**Groundwater Levels Relative to SMCs
September 2023
Arvin GSA**

Arvin-Edison Water Storage District
Kern County, California
September 2023
B60064.10



Figure 2



Path: X:\C20055.00\Maps\2023\09\SMC Figures\Fig3- July_SMC_WR.mxd

Legend

Groundwater Subbasin

- Kern County (DWR 5-022.14)
- White Wolf (DWR 5-022.18)

Sustainability Criteria Zones

- Northeast
- Southeast
- West

Wheeler Ridge-Maricopa GSA

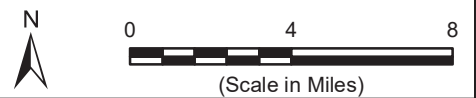
Representative Monitoring Well and Status as of September 2023

- Water Level Above MO (12 or 86%)
- Water Level Between MO and MT but closer to MT (2 or 14%)

- Notes**
- All locations are approximate.
 - Groundwater elevations reported in units of ft msl.
 - All water levels collected during September 2023.
 - Arrow direction indicates water level change from previous month.

- Sources**
- Basemap is ESRI's ArcGIS Online world topographic map, obtained 4 October 2023.

- Abbreviations**
- DWR = California Department of Water Resources
 - ft msl = feet above mean sea level
 - GSA = Groundwater Sustainability Agency
 - MO = Measurable Objective
 - MT = Minimum Threshold
 - SMC = Sustainable Management Criteria



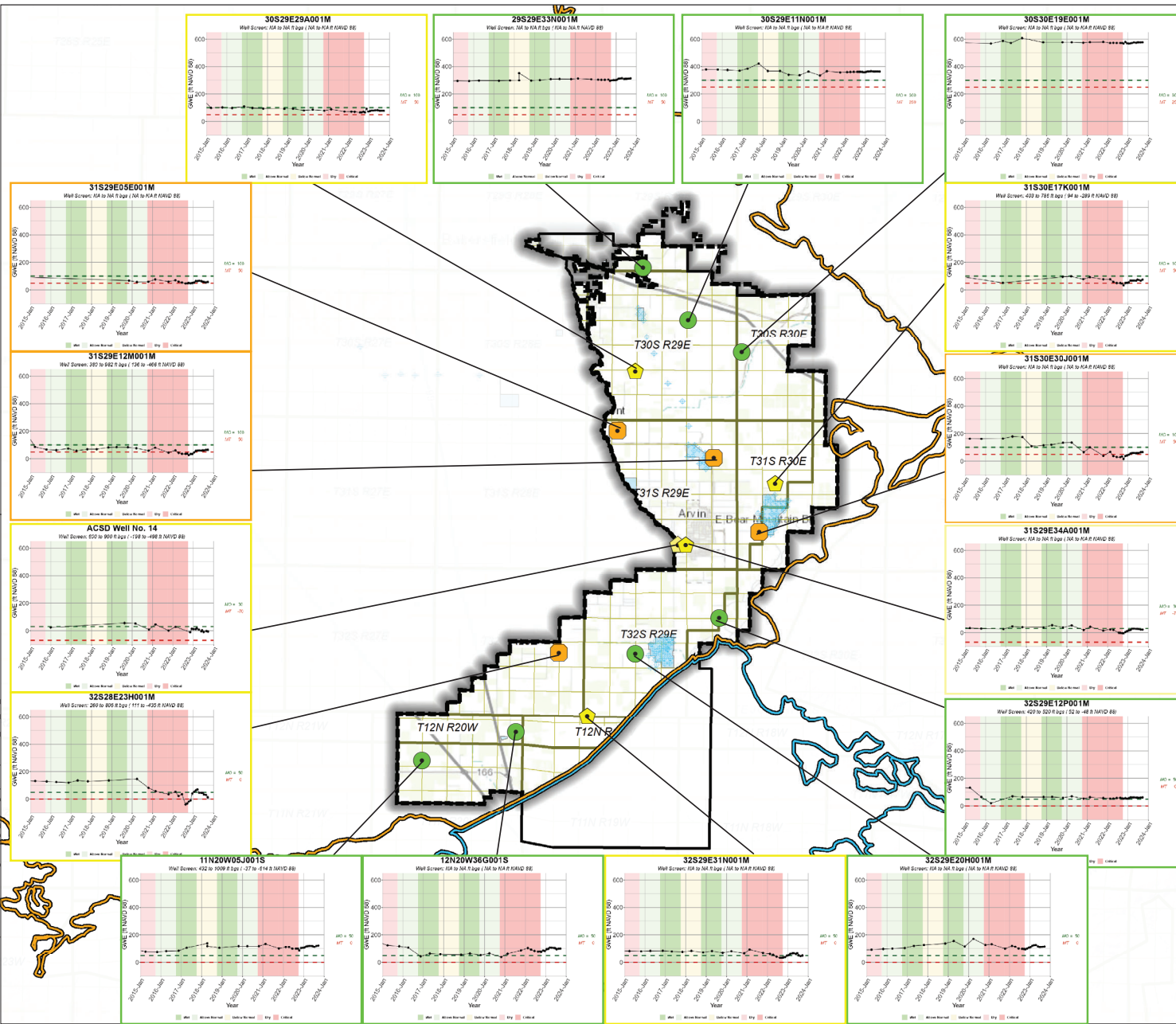
**Groundwater Levels Relative to SMCs
September 2023**

Wheeler Ridge-Maricopa GSA
 South of Kern River
 Kern County, California
 September 2023
 C20055.00

Figure 3

INTERIM FIGURE - FOR INFORMATIONAL PURPOSES ONLY

Path: X:\C20055_00\Mapes\2023\08\SHMC_Eligible\Fig4_Hydrographs\September_WL_AE_2015.mxd



Legend

Representative Monitoring Well and Status as of September 2023

- Water Level Above MO (7 or 44%)
- Water Level Between MO and MT but closer to MO (5 or 31%)
- Water Level Between MO and MT but closer to MT (4 or 25%)
- + District Recovery Well
- AEWS D Spreading Basin
- Arvin GSA
- Arvin-Edison Water Storage District
- Groundwater Subbasin**
- Kern County (DWR 5-022.14)
- White Wolf (DWR 5-022.18)

Abbreviations

- AEWS D = Arvin-Edison Water Storage District
- DWR = California Department of Water Resources
- ft msl = feet above mean sea level
- GWE = groundwater elevation
- MO = measurable objective
- MT = minimum threshold
- RMW = Representative Monitoring Well

Notes

1. All locations are approximate.
2. Groundwater elevations are in feet mean sea level.
3. Undesirable Results are deemed to occur if groundwater levels in 40% or more (7 or more) RMWs are below their respective MT for 4 consecutive bi-annual measurements (Spring and Fall).
4. All RMW status based on September 2023 measurements.

Sources

1. Basemap is ESRI's ArcGIS Online world topographic map, obtained 5 October 2023.
2. Water level information obtained from AEWS D.



DRAFT

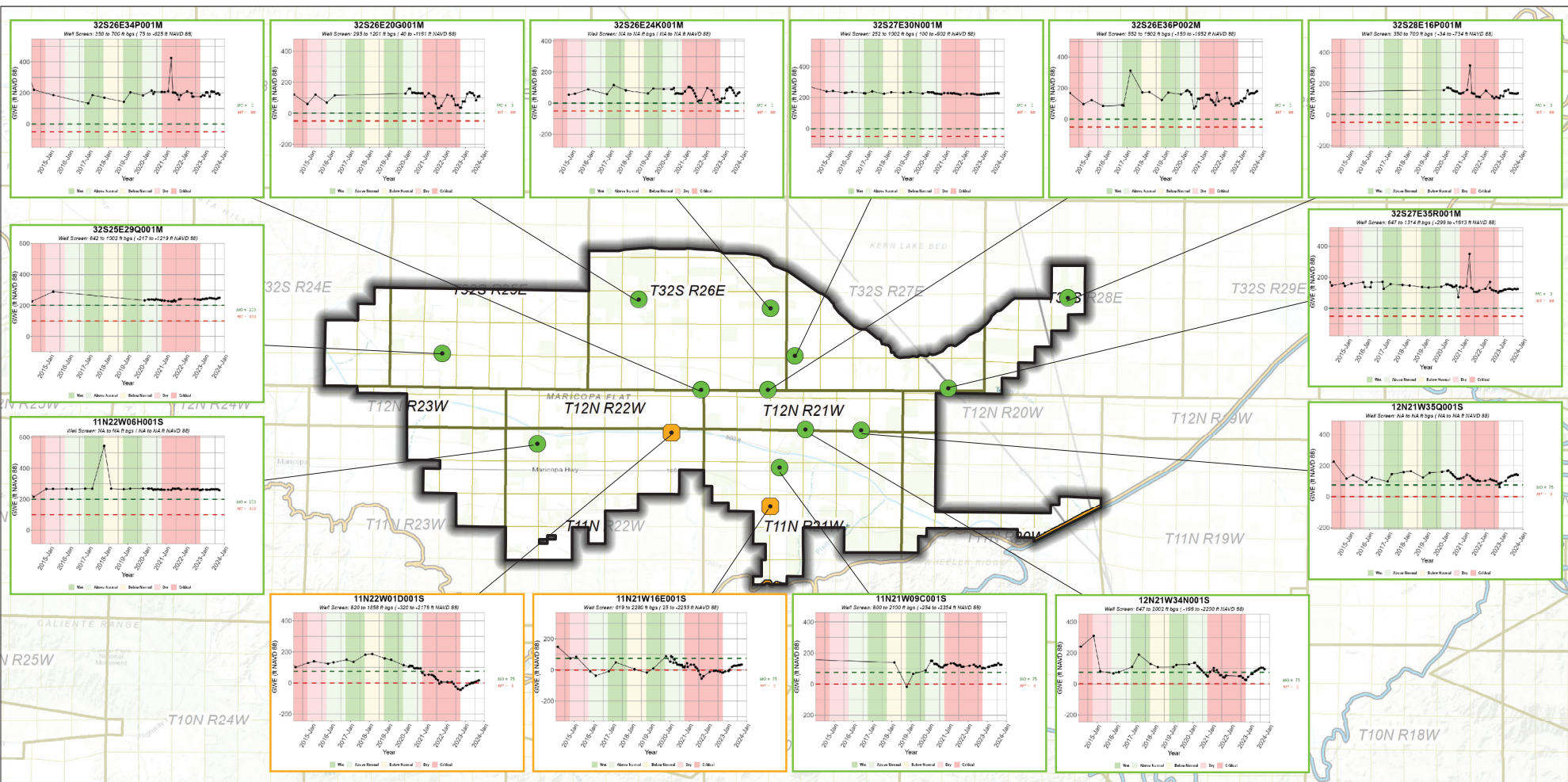
Hydrographs in Representative Monitoring Wells (Jan 2015 - September 2023)

Arvin-Edison Water Storage District
Kern County, CA
September 2023
C20055.01



Figure 4

INTERIM FIGURE - FOR INFORMATIONAL PURPOSES ONLY



Legend

Representative Monitoring Well and Status as of September 2023

- Water Level Above MO (12 or 86%)
- Water Level Between MO and MT but Closer to MT (2 or 14%)

- Wheeler Ridge-Maricopa GSA
- Kern County (DWR 5-022.14)
- White Wolf (DWR 5-022.18)

Notes

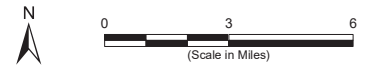
1. All locations are approximate.
2. Groundwater elevations are in feet mean sea level.
3. Undesirable Results are deemed to occur if groundwater levels in 40% or more (6 or more) RMWs are below their respective MT for 4 consecutive bi-annual measurements (Spring and Fall).
4. All RMW status based on September 2023 measurements.

Sources

1. Basemap is ESRI's ArcGIS Online world topographic map, obtained 5 October 2023.
2. Groundwater elevation data provided by WRMWS.

Abbreviations

- DWR = California Department of Water Resources
- ft msl = feet above mean sea level
- GSA = Groundwater Sustainability Agency
- MO = Measurable Objective
- MT = Minimum Threshold
- RMW = Representative Monitoring Well
- WRMWS = Wheeler Ridge-Maricopa Water Storage District



Hydrographs in Representative Monitoring Wells (January 2015 - September 2023)
Wheeler Ridge-Maricopa Water Storage District
Kern County, CA
September 2023
B70103.01
Figure 5

